

Heavy Duty Moisture Meter

Fast, accurate, wood moisture measurements with built-in self-calibration

Features:

- Super large 1.4" (36mm) LCD display
- Displays wood moisture content from 9-30% with a 0.1% resolution
- Memory contains 9 material groups including calibrations for approximately 150 species of wood
- Built-in self calibration with manual temperature compensation adjustment
- Record/Recall MIN/MAX readings
- Data Hold plus Auto shut off
- Built-in RS-232 serial interface for connection to a PC
- Complete with 2 pin moisture probe, 40" cable, 10 spare pins, protective holster, and 9V battery.



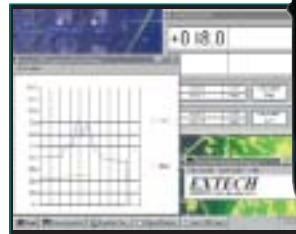
Specifications:	
Range / accuracy(%rdg+digits):	9% to 30% / $\pm(4\%+5d @9-24\%)$
Resolution:	0.1%
Sampling time:	0.8 second
Manual Temperature	Compensation: 32 to 122°F (0 to 50°C)
Dimensions/Weight:	Meter: 7x2.9x1.3" (180x72x33mm) / 12.3oz (350g) Probe: 0.9" (23mm)D 6.5" (165mm)L

Interface Options:

- Optional Windows® Data Acquisition Software and serial cable enable user to display and capture readings on a PC, and set time intervals and alarms
- Optional battery operated Datalogger module stores over 8000 readings for later transfer to a PC

Applications:

- Wood products, Furniture making/repair, wood floor manufacturing & installation, wood drying, building inspection, pest control, lumber inspection, fire damage, and water damage



Ordering Information

407777Heavy Duty Moisture Meter
407779Spare contact Pins

Accessories

156119117 VAC Adaptor
156221220 VAC Adaptor
140001Hard Vinyl Carrying Case

Options

407001Data Acquisition Software and cable
380340Datalogger Module, Battery powered

Models in the Heavy Duty Series include:

Thermometers • Anemometers • Infrared • Humidity • Light • Moisture • pH • Dissolved Oxygen • Conductivity • Pressure

EXTECH INSTRUMENTS CORPORATION
285 Bear Hill Road, Waltham, MA 02451-1064, U.S.A.
Phone: 781-890-7440 • FAX 781-890-7864

ISO 9001:2000 CERTIFIED

Make mine an Extech!
www.extech.com



08/03 - R1